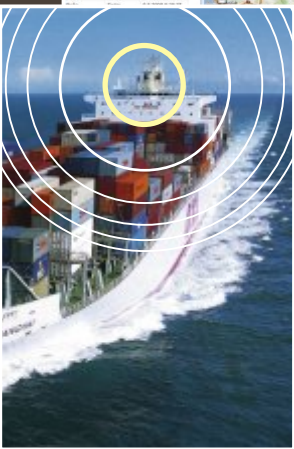
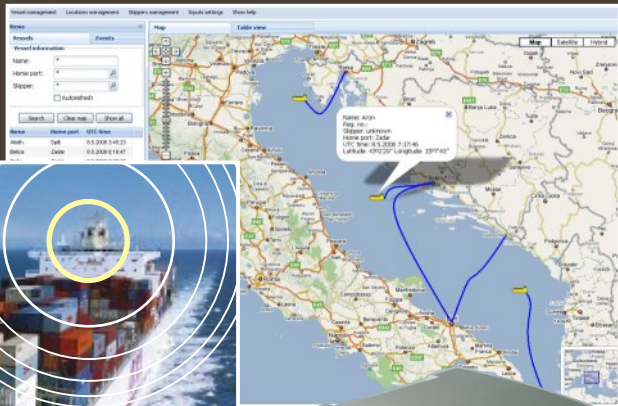




TRULY GLOBAL COVERAGE AND ABSOLUTE ECONOMY IN RUNNING COSTS

BlueTraker® transponders use Iridium Constellation. Iridium Constellation is the only system offering a truly 100% global coverage (from pole to pole) above 70° Latitude. Due to the low-earth orbiting satellites Iridium has the shortest latency of communication (a few seconds only) and the antenna utilises less hazardous radio frequencies. BlueTraker® LRIT ensures your ship is covered by the satellite network wherever it might be, 24 hours a day 7 days a week, and reduces airtime costs automatically and effectively.

Tracking Ships on nautic maps with BlueTraker® LRIT HW solution



BlueTraker® LRIT mounted on location

TECHNICAL SPECIFICATION

External power supply:

12V --- or 24V --- nominal / 1A

CPU and memory:

Philips/ARM based

Integrated Antennas:

Iridium, GPS

Installation:

External-mast, roll-bar, etc.

Mounting accessoires:

UniMount, MastMount, TowerMount

Dimensions (w x h x l):

198 x 67 x 198 mm (7,80 x 2,64 x 7,80 in.)

Weight:

900 g (31,77 oz)

Outer-shell colour:

White

95-08-09



WORLD PREMIERE
at SMM® 2008

The Worlds first!

**Tracking transponder
for remote monitoring
of ships**



2 0 0 7



All in one solution!



EMA d.o.o.
Mariborska 1
SI - 3000 Celje
SLOVENIA

www.bluetraker.com
www.ema.si

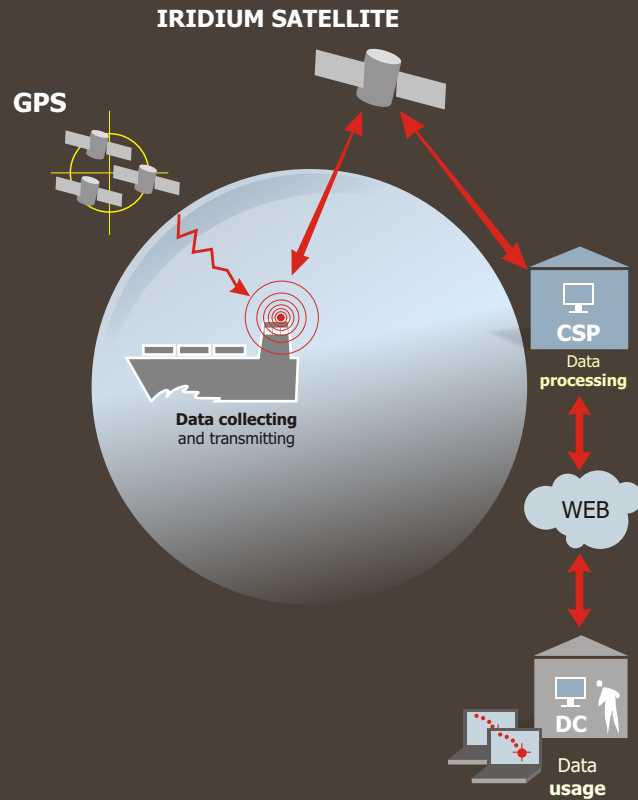
+386(0)3 42 84 800
sales@ema.si
www.ema.si

EMA reserves the right to make changes without notice to products and or specifications.
©2008 EMA - Wireless data Solutions All rights reserved.
All trademarks or registered trademarks are the property of their respective owners.

BlueTraker® LRIT is a revolutionary satellite device for tracking and monitoring shipping fleets anytime and anywhere at sea for low investment and modest airtime running costs.

ABSOLUTELY WIRELESS

Bi-directional communication channel to and from the monitoring centres. Using satellite communication (Iridium) keeps down costs. Effective position reporting will enable messaging with 1 minute latency on the high seas. Real time reporting is available on the market now.



INTEGRATED DESIGN

BlueTraker® LRIT is mechanically and electrically a fully integrated device with a central processing unit consisting of Satellite transceivers and fitted with its very own embedded antennas. Everything is packed inside a very robust housing made of double shell construction. This level of integration protects from the kind of fraud or misuse which often plagues "cabling rich" modular devices.

ABSOLUTELY ROBUST

Your new tracking device mounts externally onto your ship and resists all the weather conditions, mechanical bumps or electrical interference that might occur in years of operation. The BlueTraker® LRIT housing consists of a double-shell construction. Both shells are separated by a layer of air which is not sealed to the external environment - air can freely but slowly circulate between the two shells. Because of its double shell housing structure it can resist even the harshest chill factor when the vessel is moving at high speed through the coldest of all environments. The construction provides exceptional ingress protection up to a maximum of IP69K protection grade (car wash environment – high temperature water under high pressure). High UV radiation and temperatures from -25 °C to +55 °C will have no impact on the BlueTraker® LRIT operation.

ABSOLUTELY SECURE

Mechanical protection

- Double-shell housing
- Shock resistance tested with multiple drop from 1,2 m height to every side of device
- Mechanically coded stainless steel secure screws
- Waterproof and dust protection



Double shell housing - air flow

Electrical protection

- Power supply input protected against overvoltage (600V AC/DC) & polarity reversal
- Power line disconnect below 9 V and above 35 V DC
- 8 kV ESD protection

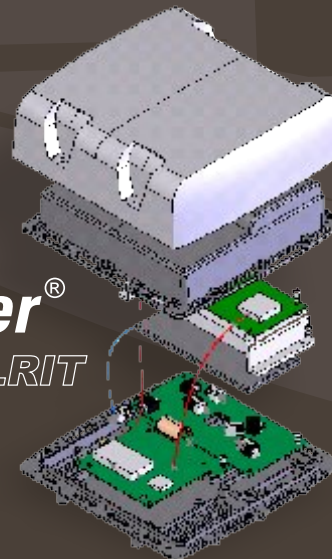
Environmental conditions

- Temperature range : -25 °C to +55 °C,
- Humidity: 10 - 100% RH
- Resistant to UV radiation (special polymer)
- Resistant to salt environment

Regulations and standards compliance

- CE1304 - Certificate of safety compliant with standards for marine radio communication devices
- IEC60950 - Compliance with the safety standard for marine communication equipment
- IEC60945 - Marine environment standards compliance
- IP68 and IP69K - Water and dust protection grade standards
- EN301843 - Compliance with the electromagnetic compatibility standard

BlueTraker®
LRIT



BlueTraker® LRIT data flow



CE1304